

4point mounting installation system of solar-panel

# series of **SOLAR GASITTO**

Installable system for variety roof!

Easy installation & High durability installation system of solar-panel

Installation system of solar-panel  
that only Roof tile maker could make an offer.



**FUJISLATE**  
<http://www.fujislate.com>



# New installation system that only roof tile manufacturer could develop.

Seeds of high functions are enormous quantity "knowledge & experience"

Roof tile manufacturer who have considered about roof since 1945 developed new concept installation method of solar-panel

Easy  
installation &  
4 points fixing



## SOLAR GASITTO

This is installation system that can make simple structure and easy installation.



※OPTION  
**Front Cover**

We recommend stylish roof. This cover is special designed for front part of solar panel. It cosmeticize front part of solar panel

High durability installation system for Rain, Wind and Earthquake.

### Resistant for **Typhoon**

When roof tiles are broken by fragment of Typhoon, rain come into house and broken roof tile drop down. These troubles make big damage. Our GASSITTO BASE is produced by high pressure machine. This machine give high density structure for roof tile. This structure increase impact resistance of roof tile.

- ① Small clearance gap between roof and Solar panel.
- ② Installation height is half of general installation system.
- ③ GASSITTO BASE has high impact resistance.
- ④ GASSITTO BASE can reduce leaking risk.

### Resistant for **Earthquake**

Japan is one of the famous Earthquake countries. Most easy way to improve resistant for Earthquake is "Don't put heavy things on Top." GASSITTO BASE's weight is 40% lighter than general clay roof tile. We can keep "light weight roof" after installation solar panel by GASSITTO BASE!



# What's kind of roof is your house?

## Available roof type of GASSIT SYSTEM.

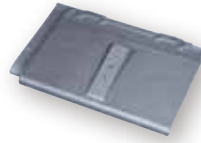


### AIR-ROOF type Flat

- DREAM30
- WOODY-SIMPLE
- ...etc.



+



GASITTO BASE for DREAM30/WOODY-SIMPLE

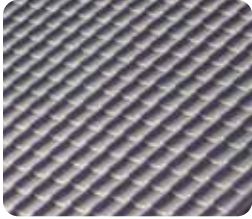
Available roof types of GASSIT SYSTEM become expanding.

Please call us when you wonder.

※Please ask to solar panel maker, when you use GASSIT SYSTEM.

※Present Aug. 2014

※Guarantee is difference between each solar panel makers, please contact to them before installation.



### JAPANESE ROOF TILE

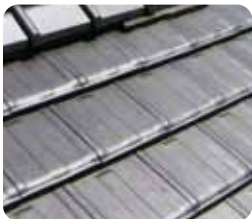
- type53A
- type53B



+



GASITTO BASE for JAPANESE ROOF TILE type53A/53B



### JAPANESE ROOF TILE type Flat

- SUPER-TRY110...etc.



+

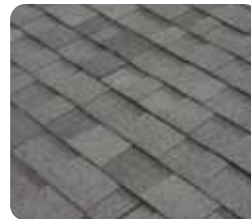


GASITTO BASE for JAPANESE ROOF TILE type Flat(F/U)



### SLATE ROOF

- COLORBEST
- FULLBEST...etc.



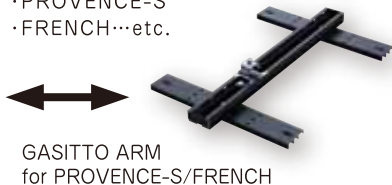
### SINGLE ROOF

- OAKRIDGE
- RIDGEWAY...etc.

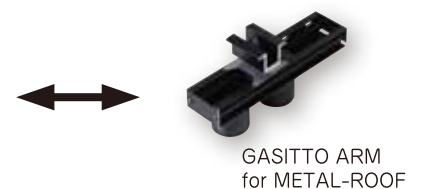


### AIR-ROOF type WAVE

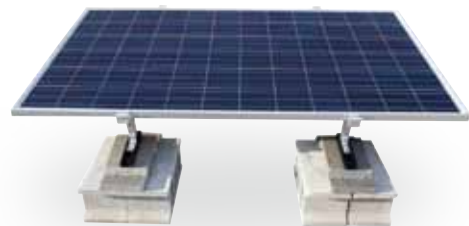
- PROVENCE-S
- FRENCH...etc.



### METAL ROOF



## SOLAR GASSIT installed on ground



### ● Short installation period.

**4steps**

- 1 Set concrete block on ground.
- 2 GASSIT BASE is fixed on concrete block.
- 3 Fix GASSIT ARM
- 4 Set up solar panel

● All parts of cell are separated.  
So we can instal freely at space that there are obstacles

● GASSIT ARM has level adjustment function.

# 1 Close to roof



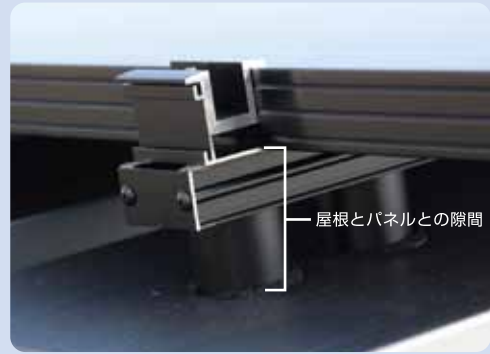
屋根とパネルとの隙間

●for WOODY-SIMPLE/DREAM30



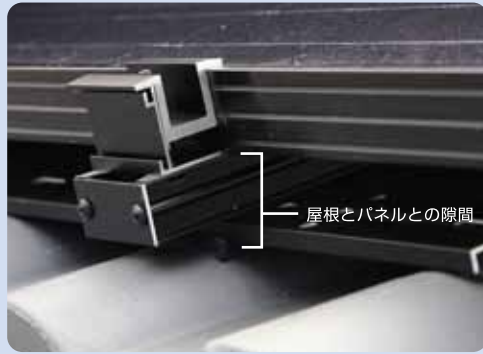
屋根とパネルとの隙間

●for SLATE



屋根とパネルとの隙間

●for METAL-ROOF



屋根とパネルとの隙間

●for FRENCH/PROVENCE-S

Clearance gap between roof and Solar panel is only thickness of GASITTO ARM. Low installation height gives high resistant for strong wind and makes looks nice.

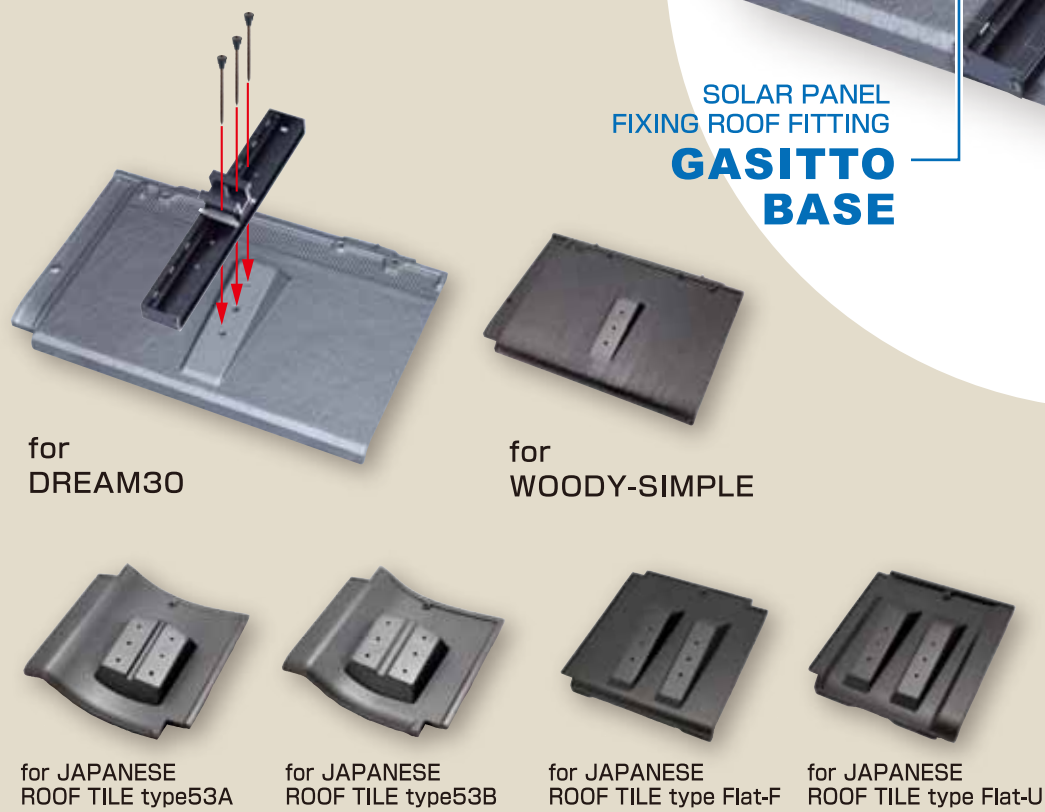
SOLAR PANEL  
FIXING METAL FITTING  
**GASITTO  
ARM**

SOLAR PANEL  
FIXING ROOF FITTING  
**GASITTO  
BASE**

**SOLAR  
GASITTO**



Simple structure and easy installation are good point not only for builder but also house owner. They can make reduction in construction period, and reduce difference of finish quality between constructors. Specially we don't need to do cutting and grinding process when we use GASITTO BASE. It makes stable installation quality. (Reduce problem like leaking and decrease strength.)



for  
DREAM30

for  
WOODY-SIMPLE

for JAPANESE  
ROOF TILE type53A

for JAPANESE  
ROOF TILE type53B

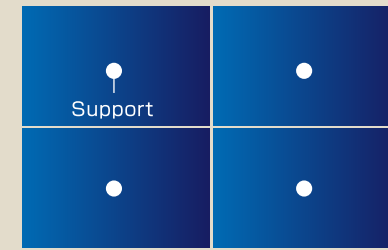
for JAPANESE  
ROOF TILE type Flat-F

for JAPANESE  
ROOF TILE type Flat-U

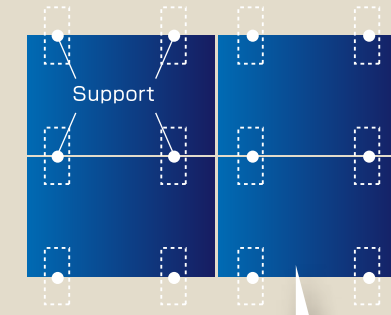
# 3 Simple structure Easy installation

# 2 A lot of bearing points

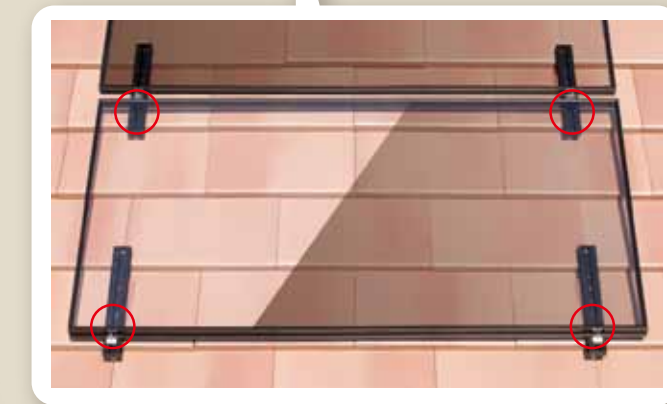
●conventional method



●SOLAR GASITTO



Number of bearing points is most biggest difference point between GASITTO SYSTEM and general system. Because GSSIT SYSTEM bear a solar panel at 4 points, we can use solar system in strong wind area for a long time .



leakage  
**1/300**



tensile strength  
**×1.3**



anti-shock property  
**×10**



weight  
**-40%**

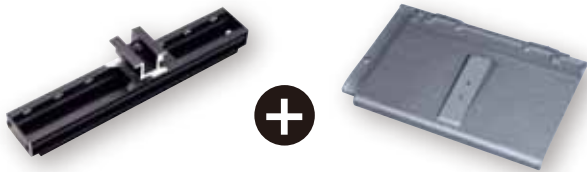
AIR ROOF has been noted high durability. GASSIT BASE has same functions as AIR ROOF.

# 4 Light weight "AIR ROOF"





**Ex. AIR-ROOF DREAM30**



GASITTO ARM  
for ROOF TILE

GASITTO BASE  
for DREAM30



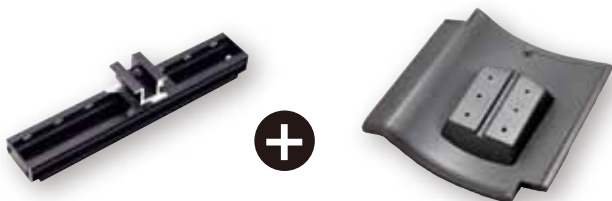
**Ex. COLORBEST**



GASITTO ARM  
for SLATE/SINGLE



**Ex. JAPANESE ROOF TILE type53A**

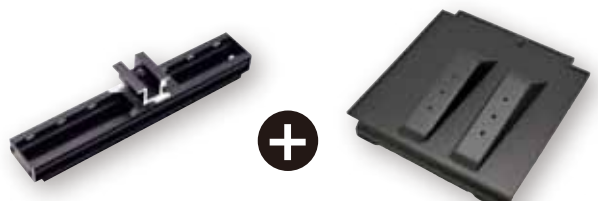


GASITTO ARM  
for ROOF TILE

GASITTO BASE  
for JAPANESE ROOF TILE type53A



**Ex. JAPANESE ROOF TILE type Flat**



GASITTO ARM  
for ROOF TILE

GASITTO BASE  
for JAPANESE ROOF TILE type Flat



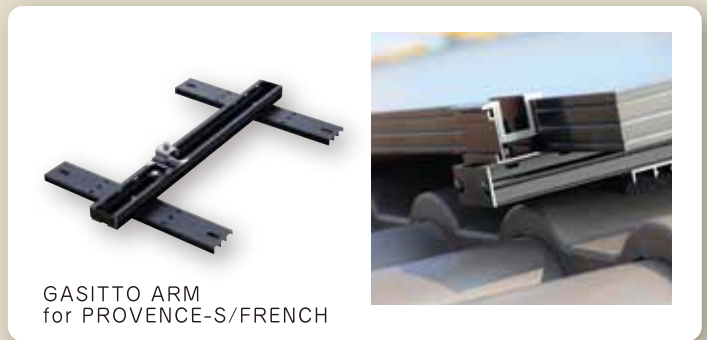
**Ex. ASPHALT-SINGLE**



**Ex. FRENCH**



GASITTO ARM  
for SLATE/SINGLE



GASITTO ARM  
for PROVENCE-S/FRENCH



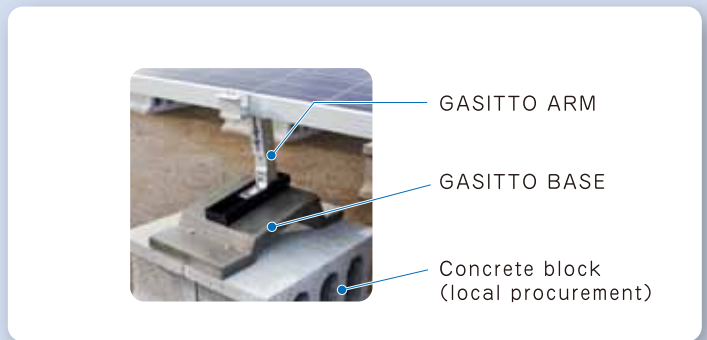
**Ex. METAL-SLATE**



**Ex. installed on ground**



GASITTO ARM  
for METAL-SLATE



GASITTO ARM

GASITTO BASE

Concrete block  
(local procurement)





Roof On Dream  
**FUJISLATE**

E-mail [air-roof@fujislate.com](mailto:air-roof@fujislate.com)  
URL <http://fujislate.com/en/>

Head office 1-32, Shingai, Tarohachizu, Kitajima-cho Itano-gun,  
Tokushima, 771-0202, Japan  
TEL.088-697-0247 FAX.088-697-0253

OSAKA 2-8-9, Tsuruno, Settsu-shi, Osaka,  
branch office 566-0035, Japan  
TEL.072-633-2060 FAX.072-633-2062

WAKAYAMA 2-7-17, Sunayamaminami, Wakayama-shi, Wakayama,  
branch office 640-8272, Japan  
TEL.073-424-1248 FAX.073-424-1250

KAGAWA 1068-9, Oomachi, Murecho, Takamatsu-shi, Kagawa  
sales office 761-0122, Japan  
TEL.087-845-2345 FAX.087-845-2354

KOUCH 676-73, Okocho Kogome, Nankoku-shi, Kochi,  
sales office 783-0048, Japan  
TEL.088-864-4400 FAX.088-864-4403

KAIFU 136, Nasa, Shishikuiura, Kaiyo-cho Kaifu-gun, Tokushima,  
store 775-0512, Japan  
TEL.0884-76-3410 FAX.0884-76-3436

KITAJIMA 1-13, Shingai, Tarohachizu, Kitajima-cho Itano-gun, Tokushima,  
factory 771-0202, Japan  
TEL.088-698-5135 FAX.088-698-3125

MATUSHIGE 1, Hamanosu, Hiroshima, Matsushige-cho Itano-gun, Tokushima,  
warehouse 771-0220, Japan  
TEL.088-699-2631 FAX.088-699-2660