



Fuji Slate Co.

AirRoof Series List

About FRC Roof Tiles



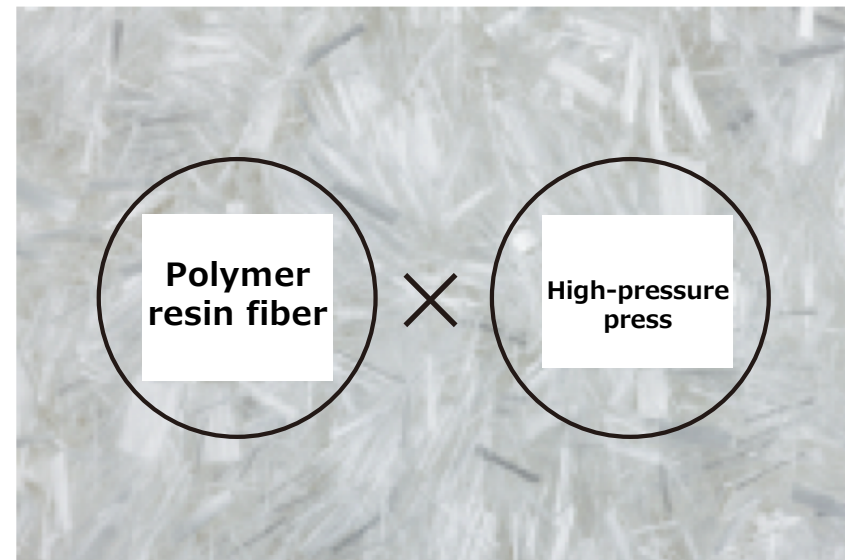
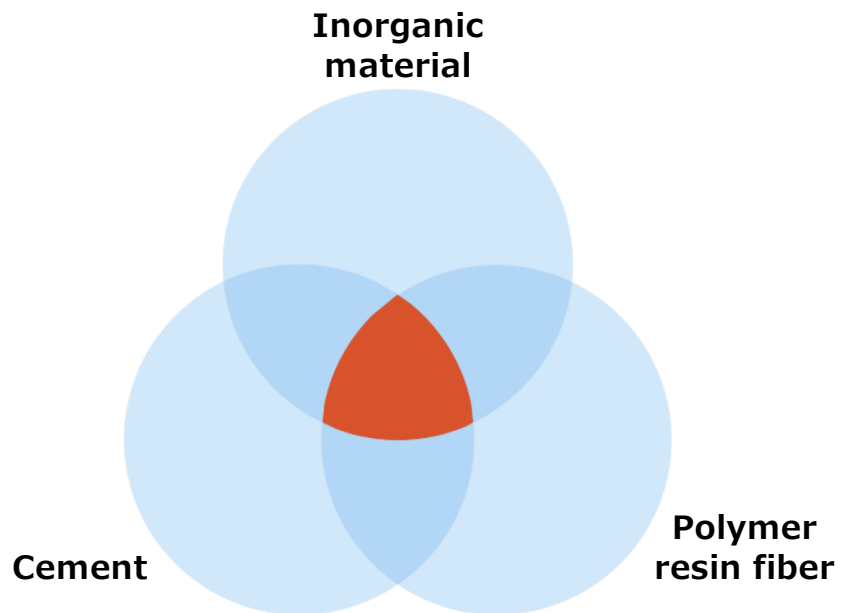
Contents

- 01 About FRC Roof Tiles**
- 02 Features of FRC Roof Tiles**
- 03 Advantages of Using Premium Coating**
- 04 Product Lineup**

01 What are FRC roof tiles?

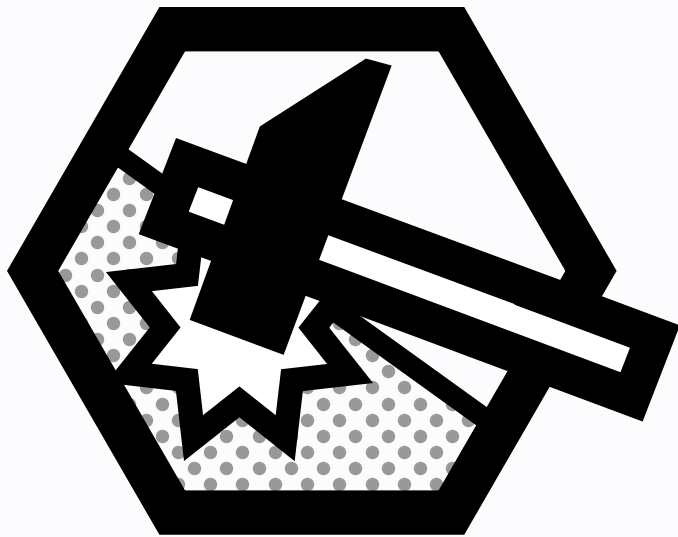
Hybrid tiles made possible by macromolecular fiber-reinforced cement.

The hybrid coating is both thin and strong.



02 Features of FRC Roof Tiles _1

Tiles break easily. That's a thing of the past.



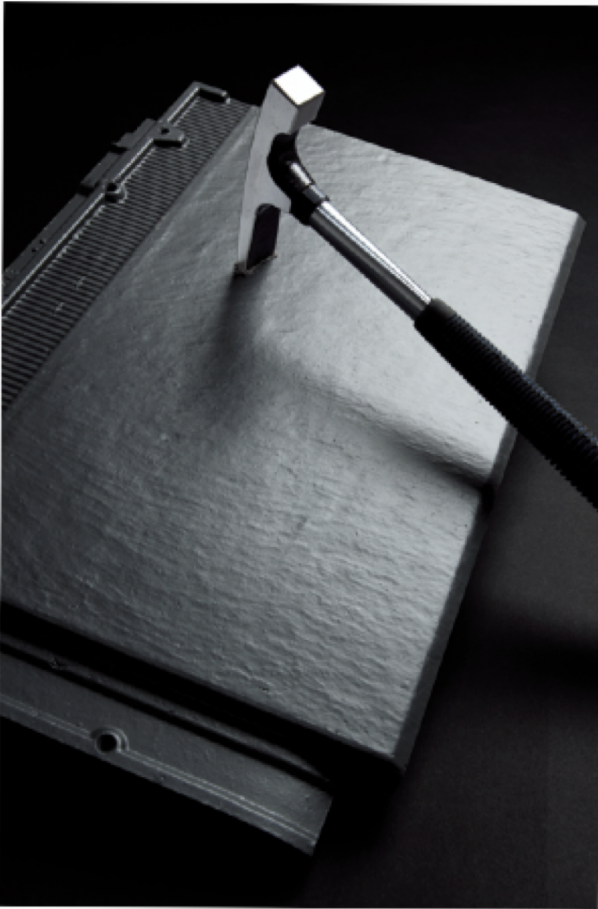
compared to the past.

About **100** times

Impact resistance

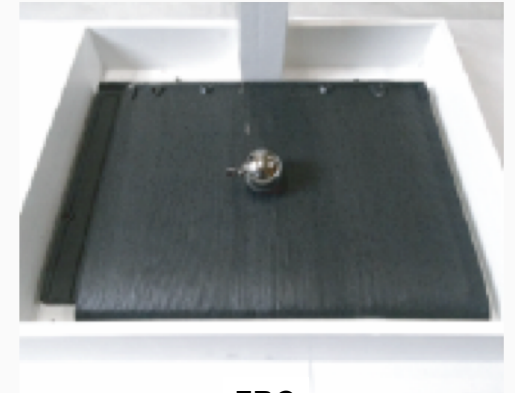
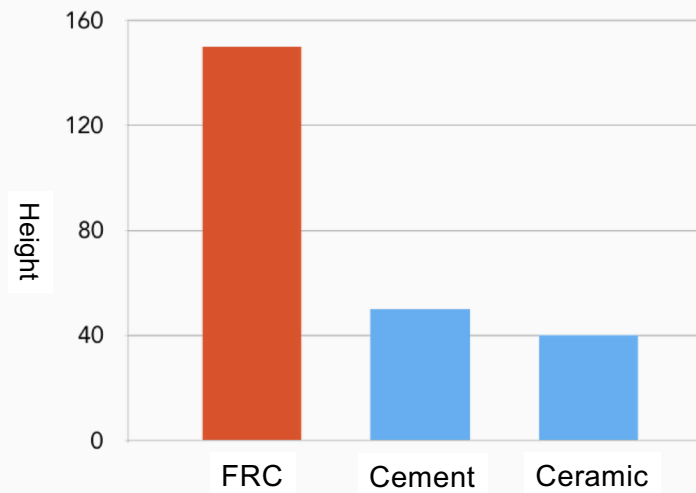
02 Features of FRC roof tiles_1

**For disaster-resistant roof tiles
The most important thing is to be resistant to cracking.**



Even if a roof tile has excellent performance, it is useless if it is broken. On the contrary, broken pieces will scatter and lead to secondary disasters. AIR-ROOF has evolved to the next generation of roof tiles by reviewing the manufacturing process and materials, the starting point.

Comparison of height at breakage



FRC



Ceramic

02 Features of FRC Roof Tiles _2

『Light』 is right.



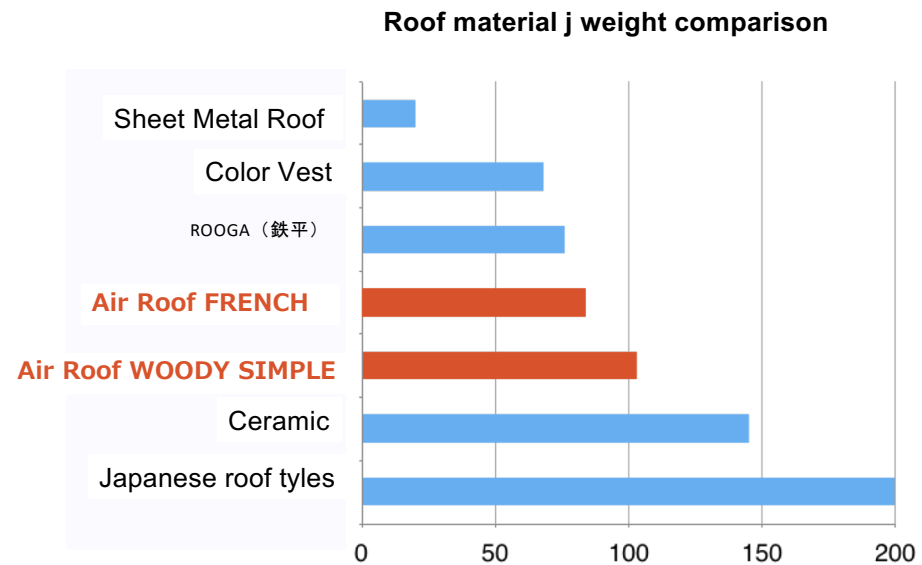
compared to the past.

About **40%** Lightweight

02 Features of FRC Roof Tiles _2

There may be unexpected major earthquakes like the Great East Japan Earthquake - Great Hanshin-Awaji Earthquake. In Japan, an earthquake-prone country, it is necessary to build houses with the assumption that they will be subject to earthquakes.

The simplest quake-proof kaup is to "avoid placing heavy objects in places that are prone to swaying.



A ceramic roof tile weighs approximately 7.5 tons for a house. This is equivalent to the weight of about seven standard automobiles. In the event of an earthquake, this much weight is swung around on the shaking ground.

However, the hybrid structure of "polymer fiber reinforced cement" reduces the weight by approximately 3.0 tons. (*For a 165-square-meter house)

02 Features of FRC Roof Tiles _3

Resistance to rainstorms means

compared to the past.



About

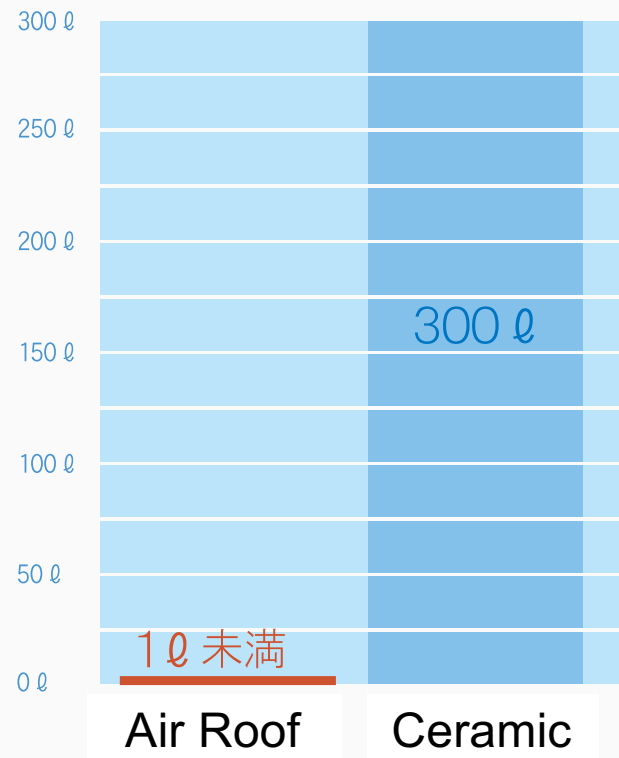
300 times

Leakage Resistance

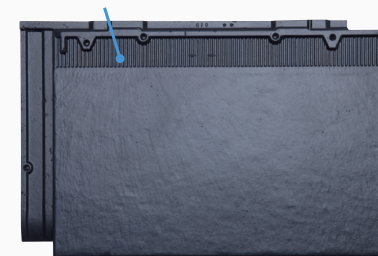
02 Features of FRC Roof Tiles _3



Air Roof is made of a tough hybrid material + high-pressure press process, which means it is resistant to rainstorms. Its high adhesiveness keeps rainwater out. The unique waterproof dike structure prevents rainwater that has penetrated into the roof from reaching the back of the roof tiles.

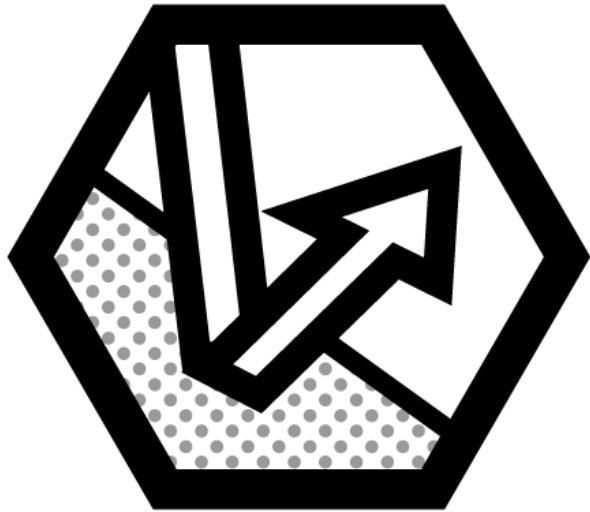


防水堤+水切り模



03 Premium Coating _1

Longer durability



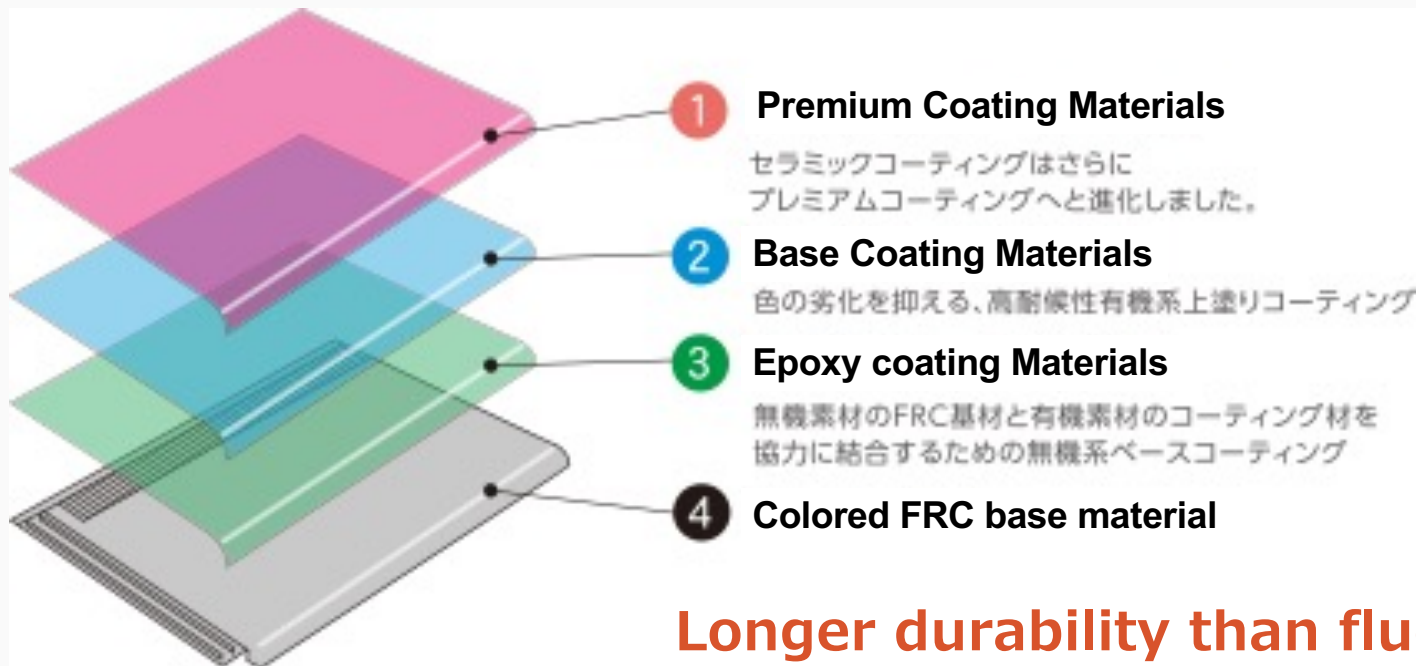
Change the common sense of roof tiles.

Highly resistant

Premium Coating

03 Premium Coating _2

Japan is a country of four seasons.
A decisive coating to protect against all kinds of damage.

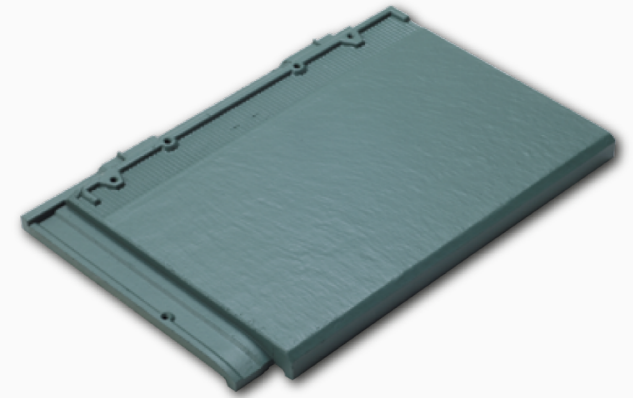


04 Product Lineup _01



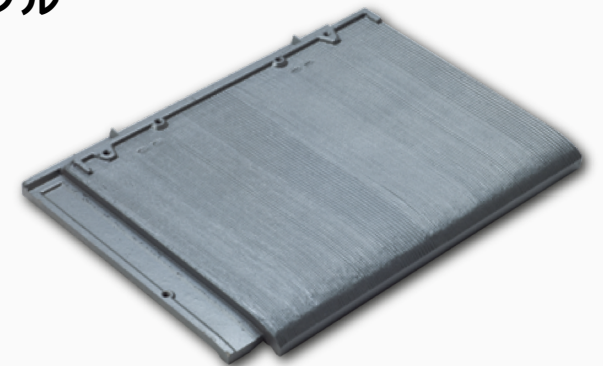
DEREAM30_ドリーム30

The superior design quality allows for a beautiful match with any roof, regardless of whether it is Japanese or Western style.



WOODY SIMPLE_ウッディシンプル

The warmth and serenity of the bark of the wood is designed into the hard roof tile, and a sense of serenity.



04 Product Lineup _02



FRENCH_フレンチ

Western standard style arranged for the Japanese house.



PROVENSE-S_プロヴァンス-S

The three-dimensional waves of the roof tiles change their appearance as the sun moves across the roof.

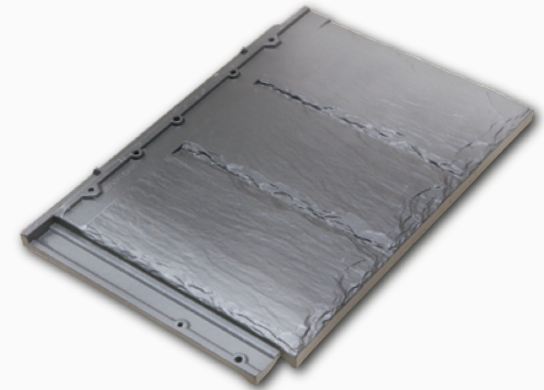


04 Product Lineup _03



STONE_ストーン

The design is reminiscent of the stone-thatched houses in old European townscapes. The expression changes depending on how the light hits it.



ZEN_ゼン

Zen" was born in Japan and inherits the performance of Air Roof while maintaining the design that best suits Japanese houses. The shape of the roof, with its good heat insulation effect and ventilation, is a perfect example of its outstanding performance in the Japanese climate.

